



PENSTOCKS
DAMPERS



WEIR PENSTOCK 3 SIDE SEALED - CCV -
"General information"

Industrial area "Asteasu", sector A pavillon 4, 20159, ASTEASU (GIPUZKOA) SPAIN Tel: (+34) 943 69 61 31 Fax:(+34) 943 69 62 39

Bidapro -CCV- is a 3 side sealed penstock projected to be wall-mounted. The design allows to control the level of fluid in a chamber.

Mainly used for the following applications:

- Waste water treatment plants
- Drain manifolds
- Hydroelectric power plants
- Storm tanks
- Desalination installations
- Irrigation installations

Standard product dimensions range from 200x200 to 2000x2000 and standard model is supplied with the following characteristics:

- Closed frame
- Rising stem
- Wall mounting



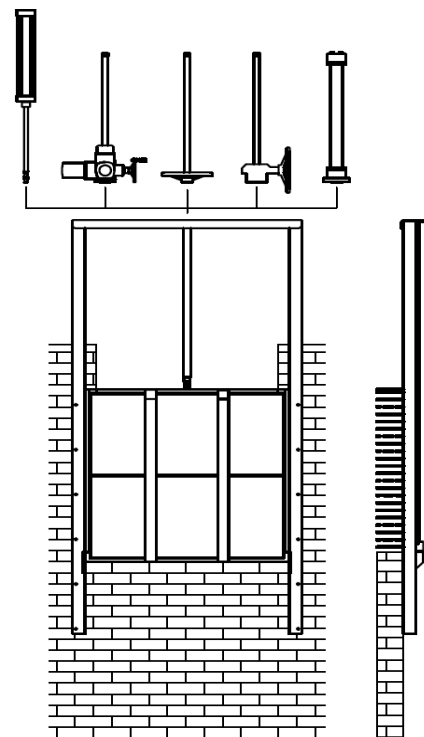
Special PIVOTING model upon request

Leakage rate according to ANSI / AWWA C 513-05

High density polyethylene sliders to minimize friction coefficient

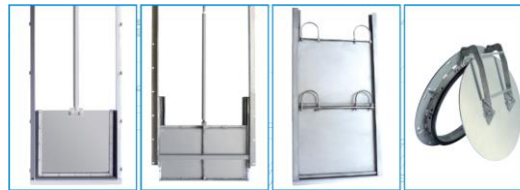
- Materials:
- Frame: carbon steel / AISI 304 / AISI 316
 - Plate: carbon steel / AISI 304 / AISI 316
 - Sliders: high density polyethylene
 - Spindle: AISI 303 / AISI 304 / AISI 316
 - Nut: bronze
 - Seat: EPDM / Nitrile

Other materials upon request



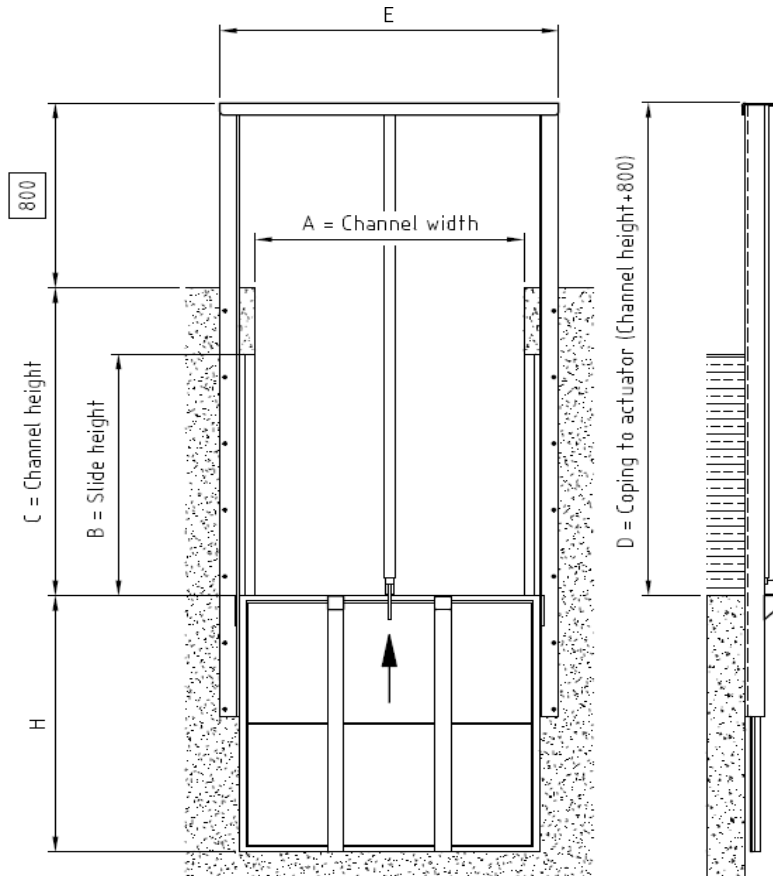


PENSTOCKS
DAMPERS



WEIR PENSTOCK 3 SIDE SEALED - CCV -
Rising stem - Non rising stem

Industrial area "Asteasu", sector A pavillon 4, 20159, ASTEASU (GIPUZKOA) SPAIN Tel: (+34) 943 69 61 31 Fax:(+34) 943 69 62 39



DIMENSIONS FROM 200X200 TO 1200X1200

AXB	E	H
200X200	420	260
300X300	520	360
400X400	620	460
500X500	720	560
600X600	820	660
700X700	920	760
800X800	1020	860
900X900	1120	960
1000X1000	1260	1060
1100X1100	1360	1160
1200X1200	1460	1220
1300x1300	1525	1350
1400x1400	1625	1450
1500x1500	1725	1550
1600x1600	1825	1650
1700x1700	1925	1750
1800X1800	2025	1850
1900X1900	2125	1950
2000X2000	2225	2050

Bidapro reserves the rights to change dimensions at any time without prior notice

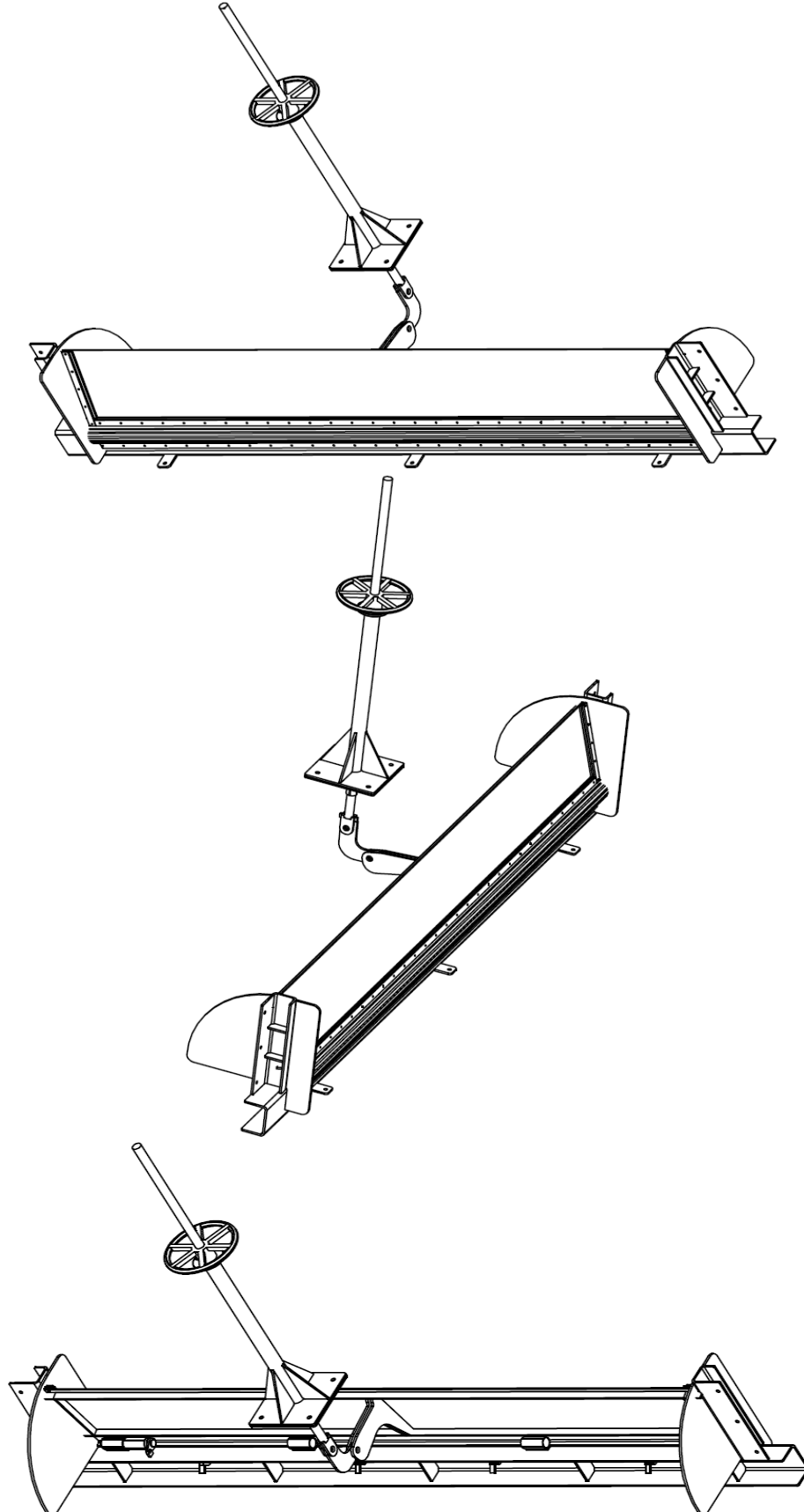


PENSTOCKS
DAMPERS



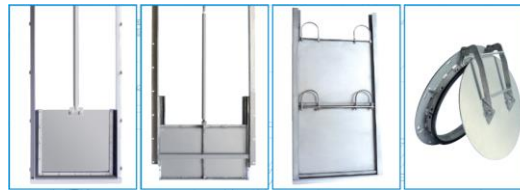
WEIR PENSTOCK 3 SIDE SEALED - CCV -
"Pivoting model"

Industrial area "Asteasu", sector A pavillon 4, 20159, ASTEASU (GIPUZKOA) SPAIN Tel: (+34) 943 69 61 31 Fax:(+34) 943 69 62 39





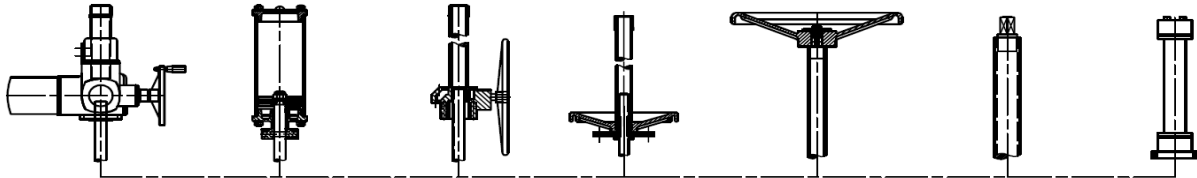
PENSTOCKS
DAMPERS



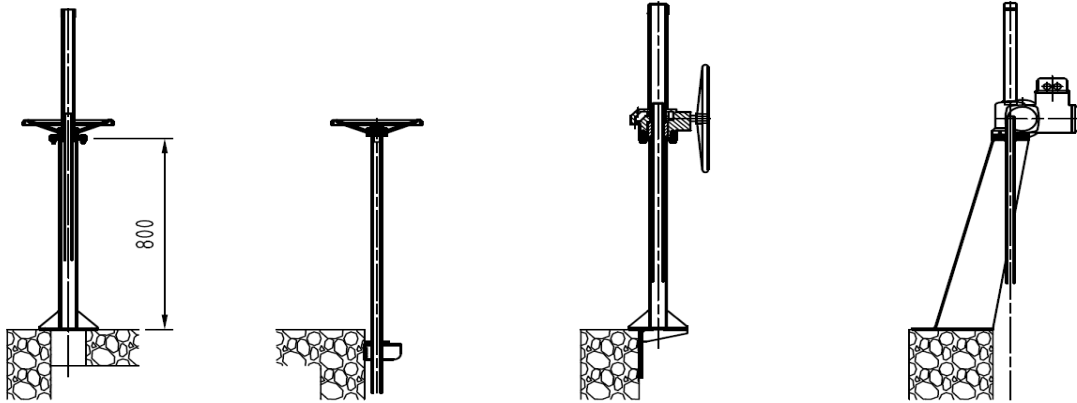
**WEIR PENSTOCK 3 SIDE SEALED - CCV -
"Actuators and placements"**

Industrial area "Asteasu", sector A pavillon 4, 20159, ASTEASU (GIPUZKOA) SPAIN Tel: (+34) 943 69 61 31 Fax: (+34) 943 69 62 39

Electric Motor Pneumatic Gear Box Handwheel Non rising handwheel Square nut Hydraulic



Straight column Guiding support Angular column Inclined column



Square nut support Wall angular support Angular support On the frame





PENSTOCKS
DAMPERS



WEIR PENSTOCK 3 SIDE SEALED - CCV - "Installation and Maintenance"

Industrial area "Asteasu", sector A pavillon 4, 20159, ASTEASU (GIPUZKOA) SPAIN Tel: (+34) 943 69 61 31 Fax:(+34) 943 69 62 39

Installation

- Make sure of the flatness of the wall according to norm: DIN 18202;
- Place the penstock on the wall in open position, perfectly aligned with the hole in the wall;
- Using the orifices of the frame, drill the holes for expanding bolts;
- Now remove the penstock in order to apply the sealant model Sikaflex (or similar) to avoid leakages;
- Then place again the penstock on the wall and tighten bolts, being careful near by the seat and making sure not to deform the frame;
- If the frame begin to deform due to unnoticed wall irregularities, stop tightening bolts. Remove the penstock, fill gaps with an appropriate grout, wait for the grout to become dry and then start again tightening;
- Clean and grease the penstock for a open - close test.
- Bidapro is not responsible for a penstock not installed correctly.

Maintenance

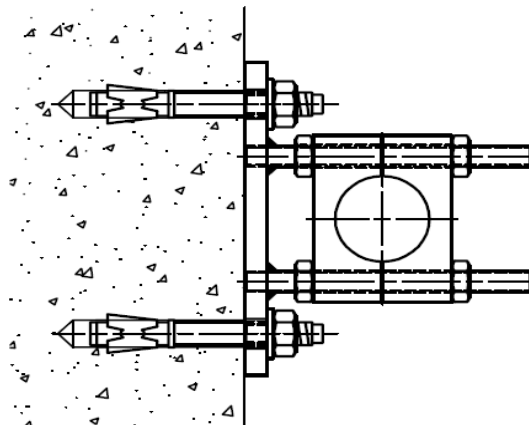
- Check the EPDM seat and change it in case of deterioration;
- Check the high density polyethylene sliders are in good condition and change them in case of deterioration. Keep the screwed part of the stem (spindle) and the actuator clean.

Routine operations

- Opening and closing:
 - to open: turn the handwheel anticlockwise;
 - to close: turn the handwheel clockwise. Do not apply unnecessary force while closing the penstock.

Guiding supports installation

- Use guiding support' holes as a guidance to drill the wall keeping in mind that you have to place one guiding support for each 2 meters of extension for CMC "rising stem" and one for each 3 meters of extension for CMC "non rising" models.
- Then tighten the bolts.





PENSTOCKS
DAMPERS



WEIR PENSTOCK 3 SIDE SEALED - CCV -
"Quotation data"

Industrial area "Asteasu", sector A pavillon 4, 20159, ASTEASU (GIPUZKOA) SPAIN Tel: (+34) 943 69 61 31 Fax:(+34) 943 69 62 39

Quantity

-

Channel dimensions

- Width mm
- Length mm

Slide height

- "C"..... mm

Coping to actuator

- "D"..... mm

Water height

- mm

Fluid direction

- Unidirectional
- Bidirectional

Installation

- Embedded
- On wall
- On side

Stem

- Rising stem
- Non rising stem

Material

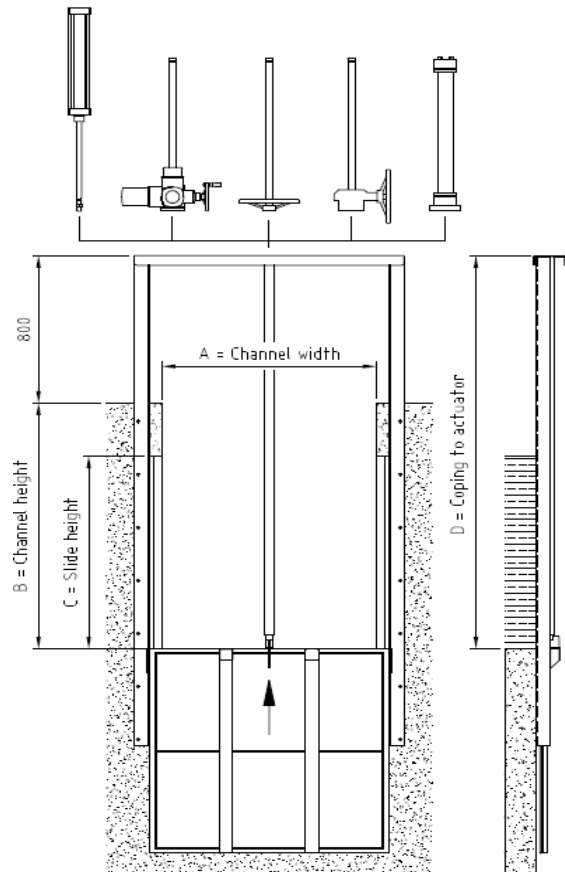
- AISI 304
- AISI 316
- Carbon steel
- Others

Actuator

- Handwheel
- Gearbox
- Electric motor
- Hydraulic
- Pneumatic
- T key
- Others

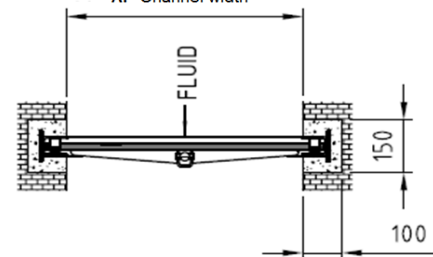
Actuator support

- Straight column
- On the frame



INSTALLATION

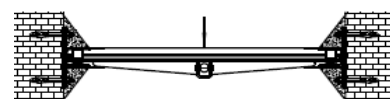
A: Channel width



Embedded



On wall



On side