



PENSTOCKS
DAMPERS



STOP LOG, 3 SIDE SEALED – CS –
"General information"

Industrial area "Asteasu", sector A pavillon 4, 20159, ASTEASU (GIPUZKOA) SPAIN Tel: (+34) 943 69 61 31 Fax:(+34) 943 69 62 39

Bidapro -CS- "Stop log" is a 3 side sealed penstock projected to be embedded in wall for controlling or directing the flow of a channel.

Mainly used for the following applications:

- Waste water treatment plants
- Drain manifolds
- Hydroelectric power plants
- Storm tanks
- Desalination installations
- Irrigation installations

Standard product dimensions range from 200x200 to 2000x2000 and standard model is unidirectional

Other options upon request



Leakage rate according to ANSI / AWWA C 513-05

High density polyethylene sliders to minimize friction coefficient

Frame: carbon steel / AISI 304 / AISI 316

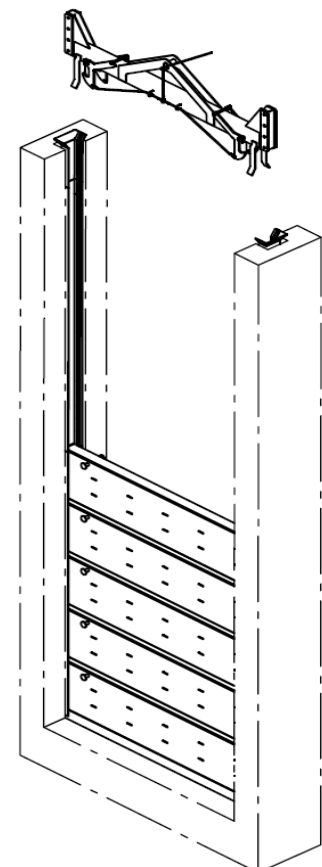
Logs: carbon steel / AISI 304 / AISI 316

Materials: Sliders: high density polyethylene

Seat: EPDM

Other materials upon request

Actuators: lifting device





PENSTOCKS
DAMPERS

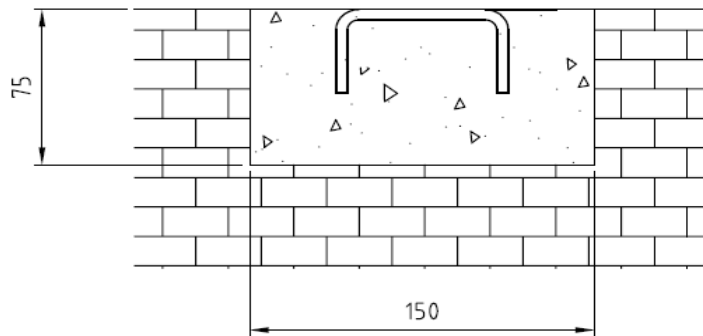
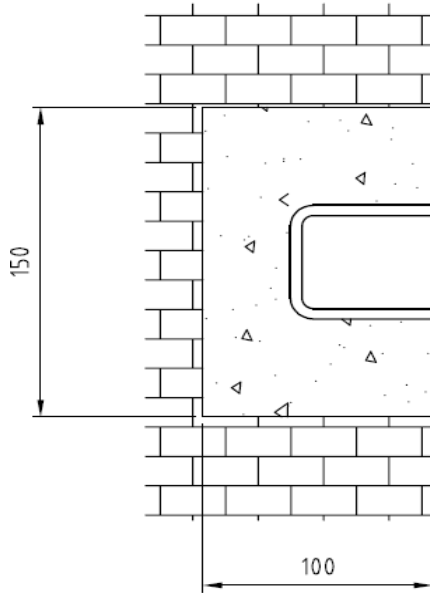


STOP LOG, 3 SIDE SEALED – CS –
"Preparing installation"

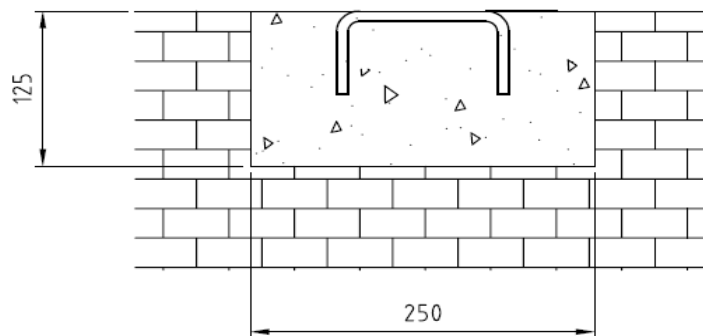
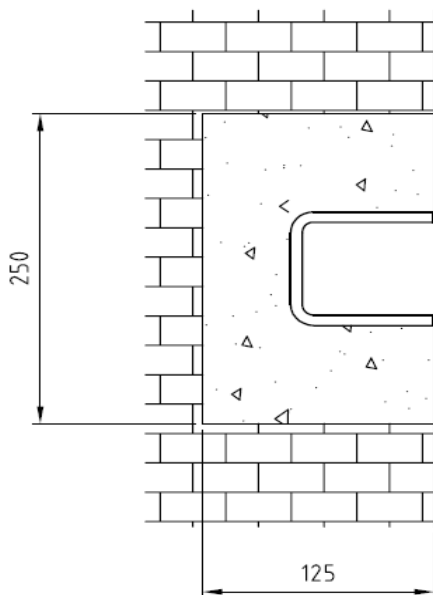
Industrial area "Asteasu", sector A pavillon 4, 20159, ASTEASU (GIPUZKOA) SPAIN Tel: (+34) 943 69 61 31 Fax:(+34) 943 69 62 39

Lateral holes' dimensions for CCA $\leq 1000 \times 1000$

Bottom hole's dimensions for CCA $\leq 1000 \times 1000$



Lateral and bottom holes' dimensions for CCA $> 1000 \times 1000$ and $\leq 2000 \times 2000$





PENSTOCKS
DAMPERS



STOP LOG, 3 SIDE SEALED – CS – "Installation and maintenance"

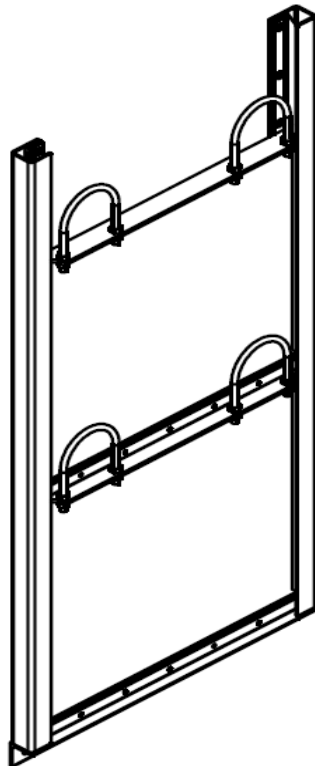
Industrial area "Asteasu" , sector A pavillon 4, 20159, ASTEASU (GIPUZKOA) SPAIN Tel: (+34) 943 69 61 31 Fax:(+34) 943 69 62 39

Installation

- Be careful unloading the assembly, then place the frame in the appropriate space previously prepared following page 3 instructions, with the seat against the flow direction;
- Level the penstock while embedding it, taking care to not create an obstacle to the flow ;
- Once levelled, use penstock's claws to weld it to the metal concrete reinforcements (if exist) or use some wood to help you fix penstock in its appropriate position, while you'r pouring the cement (SilkagROUT or similar);
- Cover the holes with some boards and pour cement;
- Let the concrete become dry and verify its correct position;
- Clean penstock before start to operate on it.
- **Bidapro does not take any responsibility for a penstock not installed correctly**

Maintenance

- Check the EPDM seat and change it in case of deterioration;
- Check the high density polyethylene sliders are in good condition and change them in case of deterioration.





PENSTOCKS
DAMPERS



STOP LOG, 3 SIDE SEALED – CS –
"Quotations data"

Industrial area "Asteasu", sector A pavillon 4, 20159, ASTEASU (GIPUZKOA) SPAIN Tel: (+34) 943 69 61 31 Fax:(+34) 943 69 62 39

Quantity

•

Channel dimensions

- Width mm
- Eight mm

Eight of each log

• mm

Total eight of logs

• mm

Number of logs

•

Water height

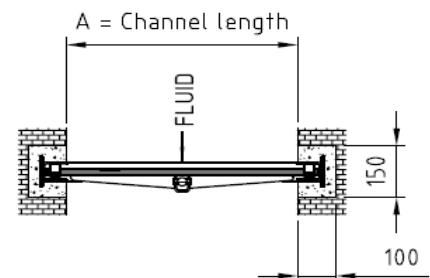
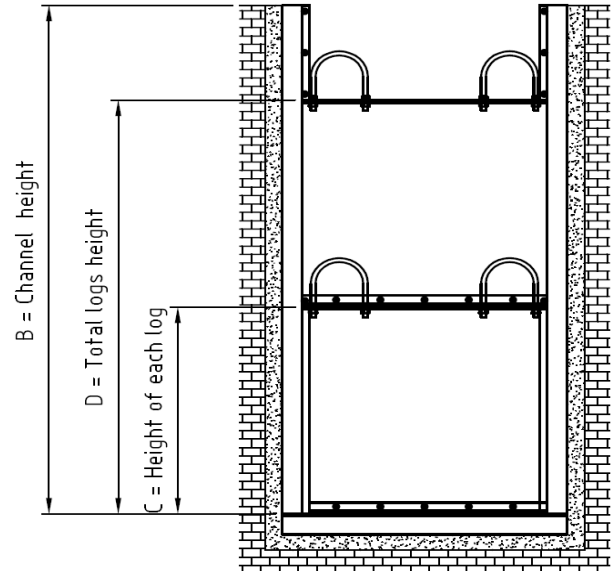
• mm

Fluid direction

- Unidirectional
- Bidirectional

Material

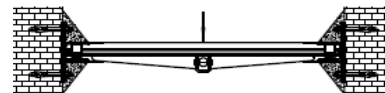
- AISI 304
- AISI 316
- Carbon steel
- Others



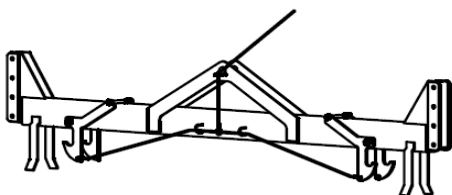
Embedded



On wall



On side



Lifting device