



PENSTOCKS
DAMPERS



FLAP VALVE - CFL -
"General information"

Industrial area "Asteasu" , sector A pavillon 4, 20159, ASTEASU (GIPUZKOA) SPAIN Tel: (+34) 943 69 61 31 Fax:(+34) 943 69 62 39

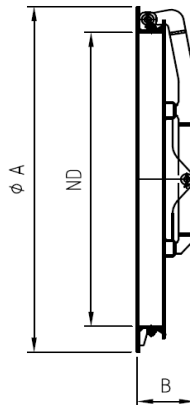
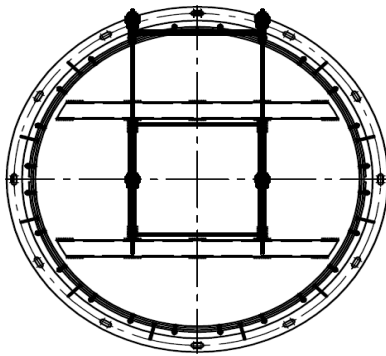
ROUND MODEL

Bidapro -CFL- is a flap valve projected to be wall-mounted at the end of a line to prevent the backflow of the water.

Welded construction, minimum maintenance and easy installation.

Max pressure: 5 meters of Water Column for standard dimensions.

Other pressures or dimensions up on request



Standard product dimensions range from DN200 to DN1200

DIMENSIONS FROM DN200 TO DN1200

DN	ϕA	B
200	340	117
300	440	117
400	540	117
500	640	117
600	740	142
700	840	142
800	940	142
900	1040	162
1000	1140	162
1200	1326	189

Materials: Frame: carbon steel / AISI 304 / AISI 316

Plate: carbon steel / AISI 304 / AISI 316

Seat: EPDM / Nitrile

Shaft: AISI 304 / AISI 316

Other materials upon request

Bidapro reserves the rights to change dimensions at any time without prior notice



PENSTOCKS
DAMPERS



FLAP VALVE - CFL -
"General information"

Industrial area "Asteasu", sector A pavillon 4, 20159, ASTEASU (GIPUZKOA) SPAIN Tel: (+34) 943 69 61 31 Fax: (+34) 943 69 62 39

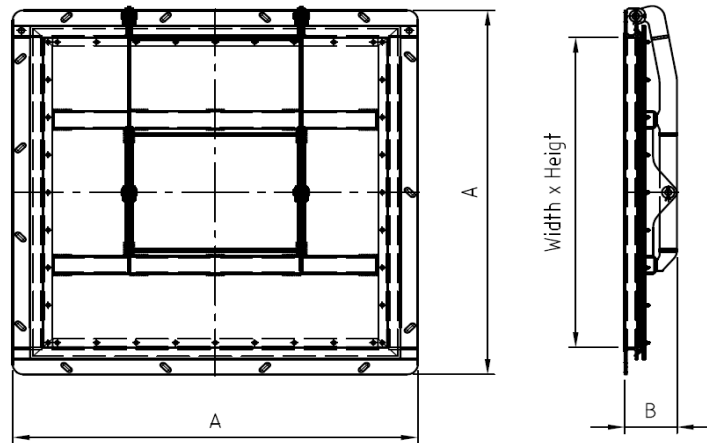
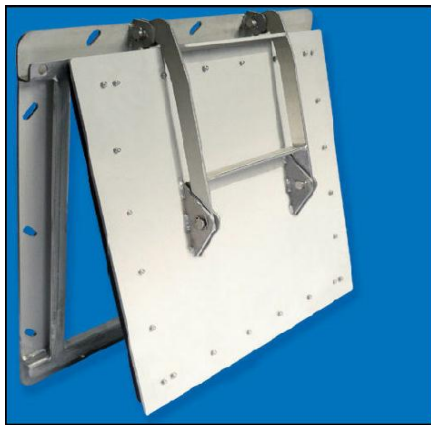
SQUARE MODEL

Bidapro -CFL- is a flap valve projected to be wall-mounted at the end of a line to prevent the backflow of the water.

Welded construction, minimum maintenance and easy installation.

Max pressure: 5 meters of Water Column for standard dimensions.

Other pressures or dimensions up on request



DIMENSIONS FROM 200X200 TO 1200X1200

WIDTH X HEIGHT	A	B
200X200	340	96
300X300	440	96
400X400	540	96
500X500	640	96
600X600	740	121
700X700	840	121
800X800	940	121
900X900	1040	141
1000X1000	1140	141
1200X1200	1370	222

Materials: Frame: carbon steel / AISI 304 / AISI 316

Plate: carbon steel / AISI 304 / AISI 316

Seat: EPDM / Nitrile

Shaft: AISI 304 / AISI 316

Other materials upon request

Bidapro reserves the rights to change dimensions at any time without prior notice



PENSTOCKS
DAMPERS



FLAP VALVE - CFL - "General information"

Industrial area "Asteasu" , sector A pavillon 4, 20159, ASTEASU (GIPUZKOA) SPAIN Tel: (+34) 943 69 61 31 Fax:(+34) 943 69 62 39

Installation

- Make sure of the flatness of the wall according to norm: DIN 18202;
- Place the Flap Valve on the wall in the open position perfectly aligned with the hole in the wall;
- Using the orifices of the frame, drill the holes for expanding bolts;
- Now remove the Flap Valve in order to apply the sealant model Sikaflex (or similar) to avoid leakages;
- Then place again the Flap Valve on the wall and tighten bolts.
- If the frame begin to deform due to unnoticed wall irregularities, stop tightening bolts. Remove the Flap Valve, fill gaps with an appropriate grout, wait for the grout to become dry and then start again tightening.
- Bidapro is not responsible for a Flap Valve not installed correctly.

Maintenance

- Check the EPDM seat and change it in case of deterioration.